



**BAUMAN  
MANUFACTURING**

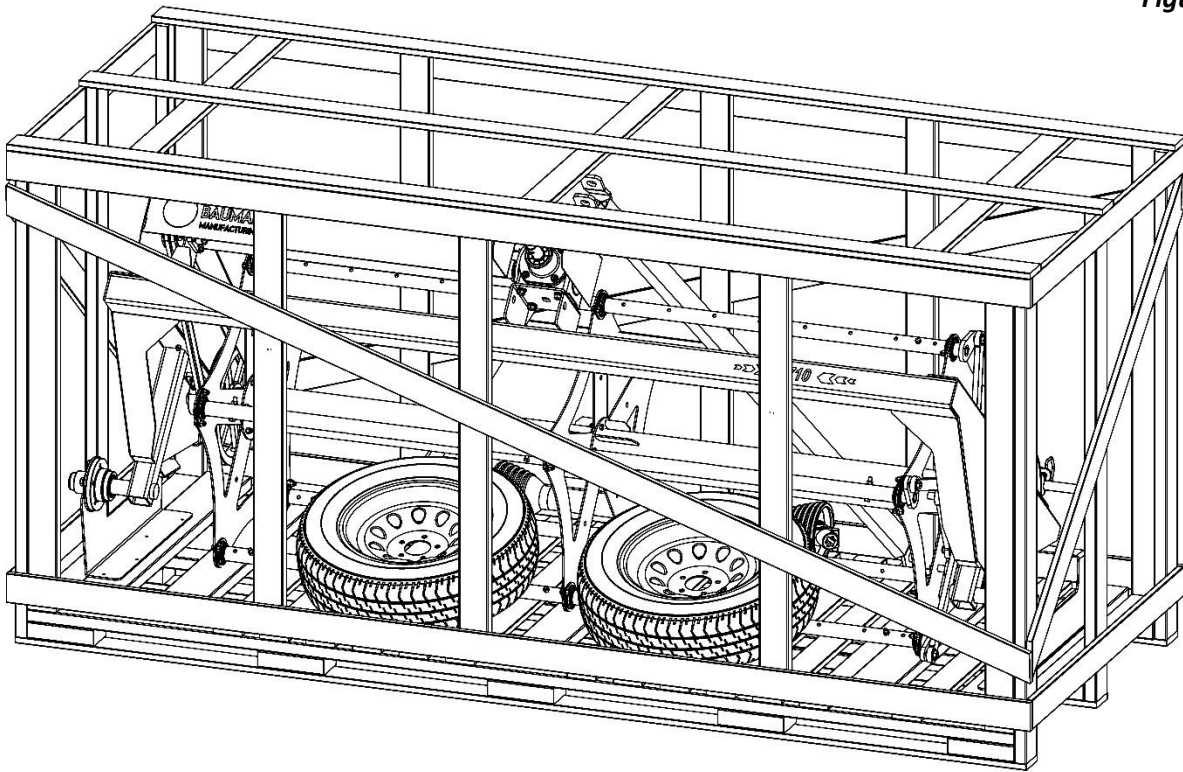


# **5710/5910 HAY TEDDER**

**UNPACK/ASSEMBLY INSTRUCTIONS**

# UNPACKING

Figure 1



- Remove protective plastic wrap from crate (figure 1).
- Remove crate sides for easy access (figure 2).
- Move all loose items away from crate in a safe location.

Figure 2

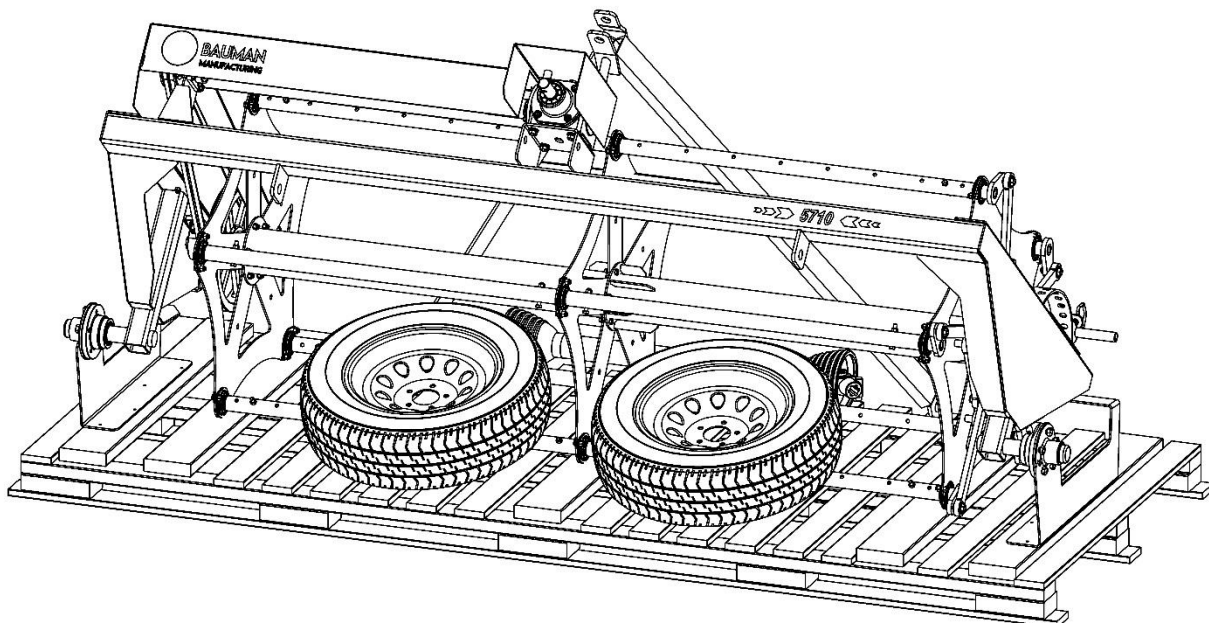
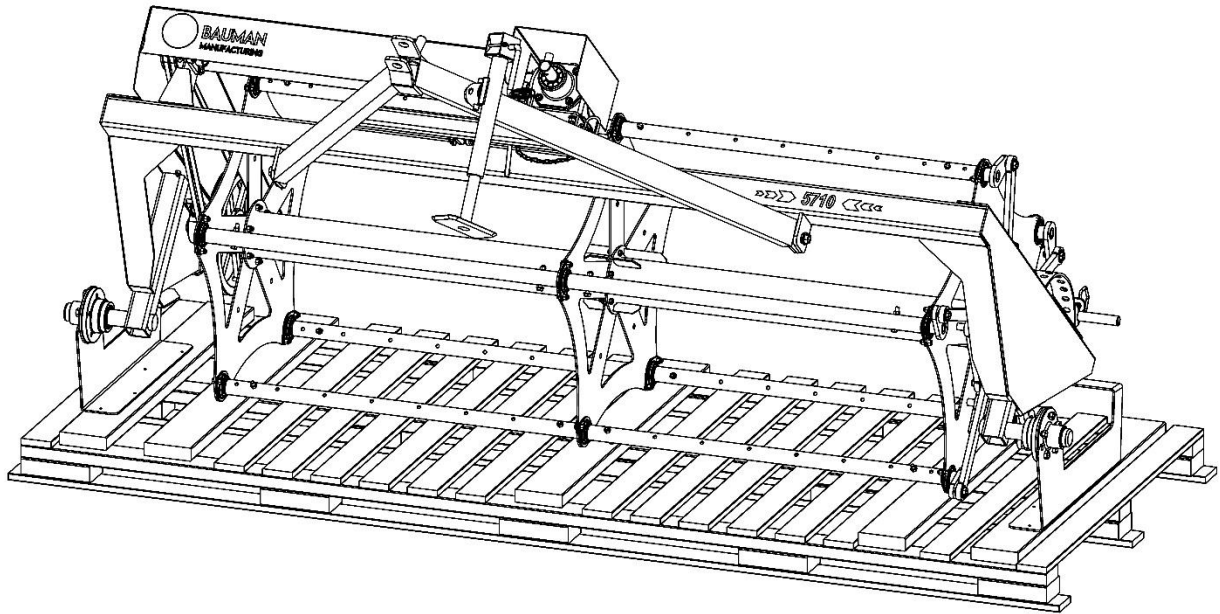
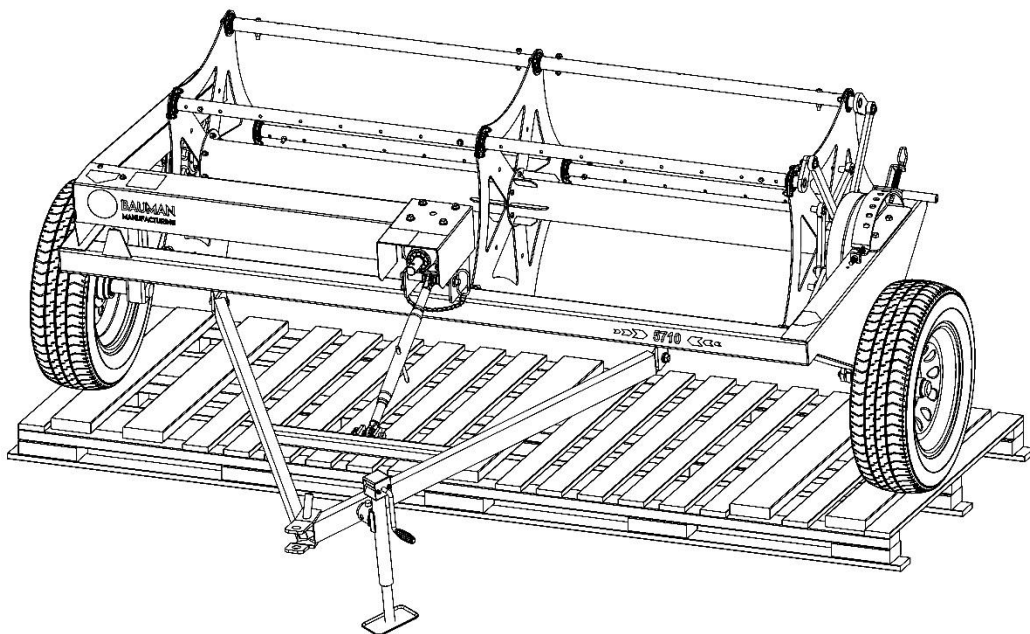


Figure 3

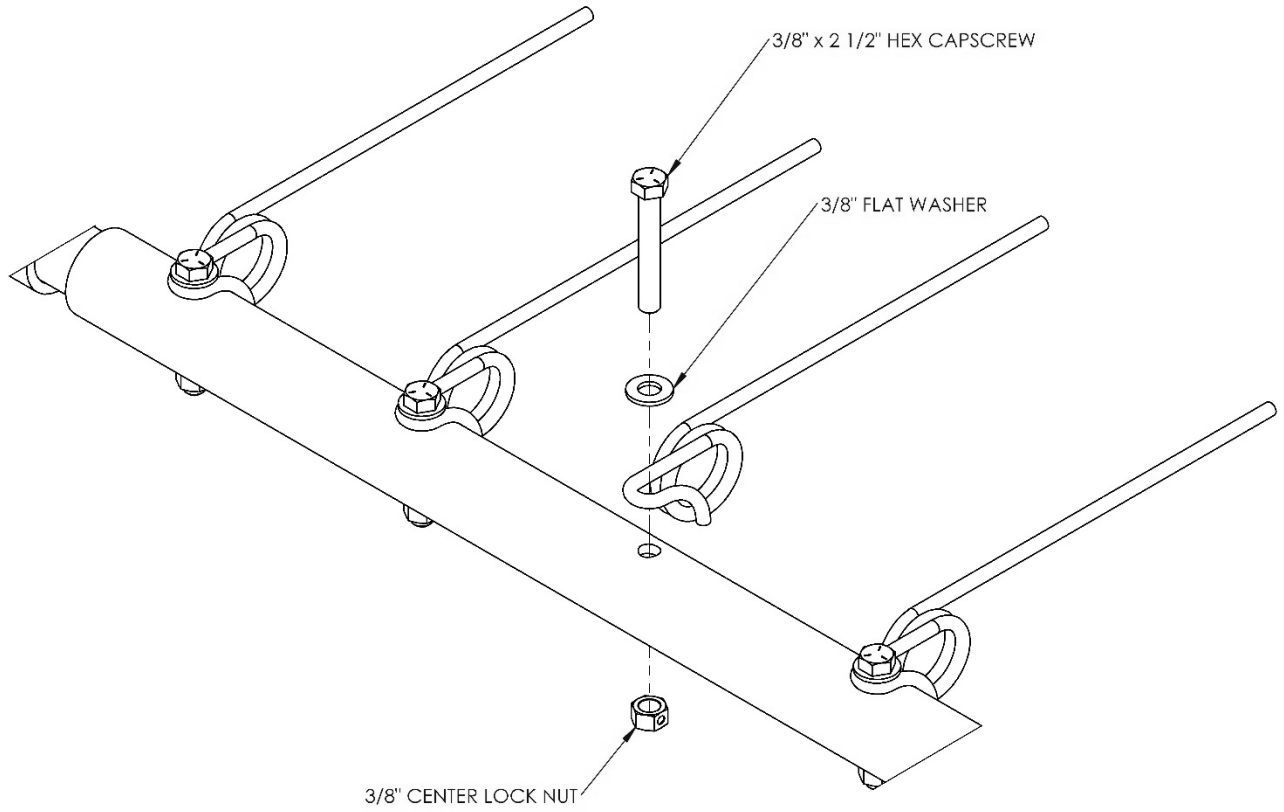


- Install hitch and jack to the Tedder frame (figure 3).
- Carefully tilt down.
- Remove hub brackets and install tires or tandem assembly (figure 4).
- Roll off crate and complete SMV sign and tine installation.

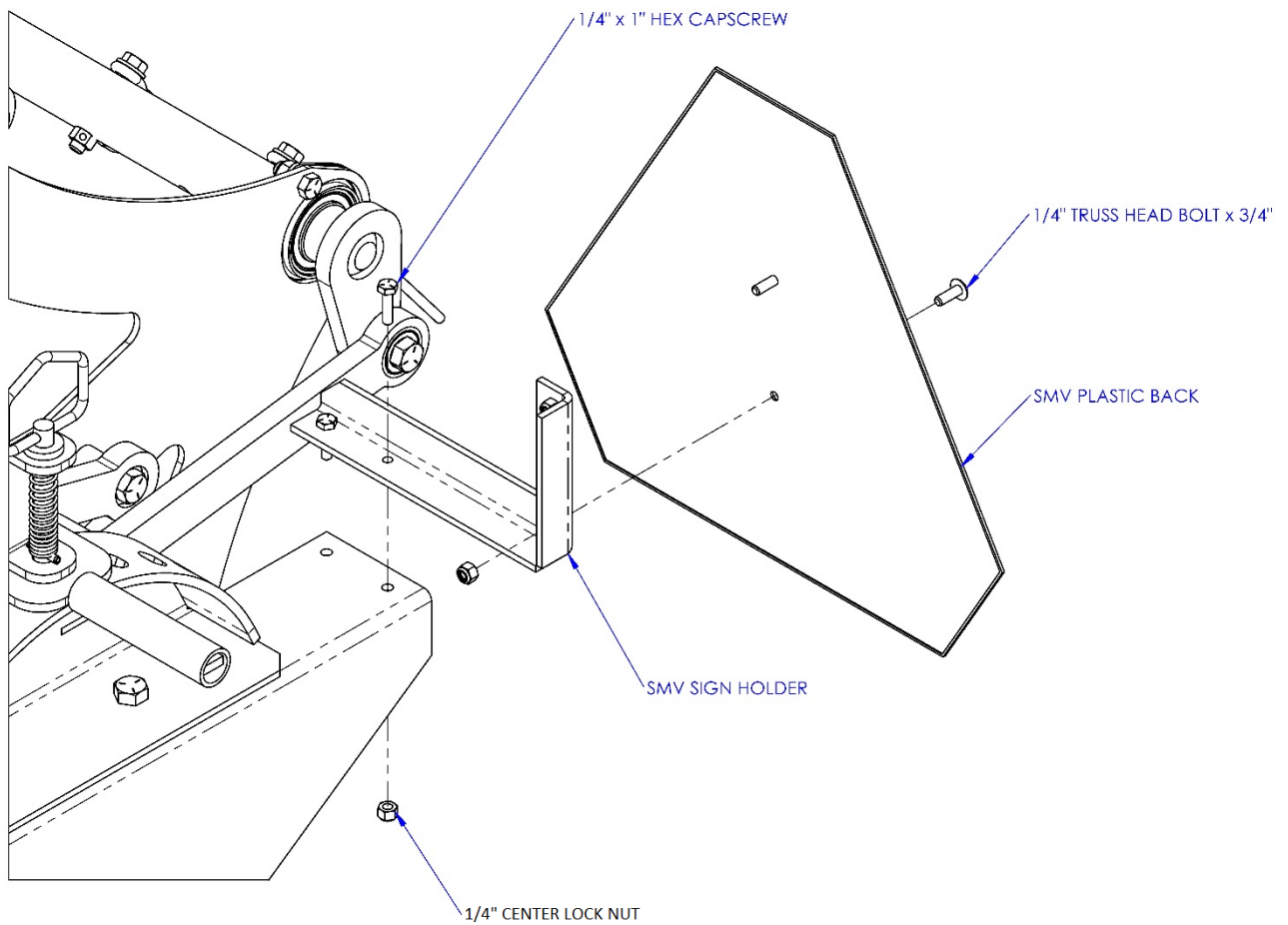
Figure 4



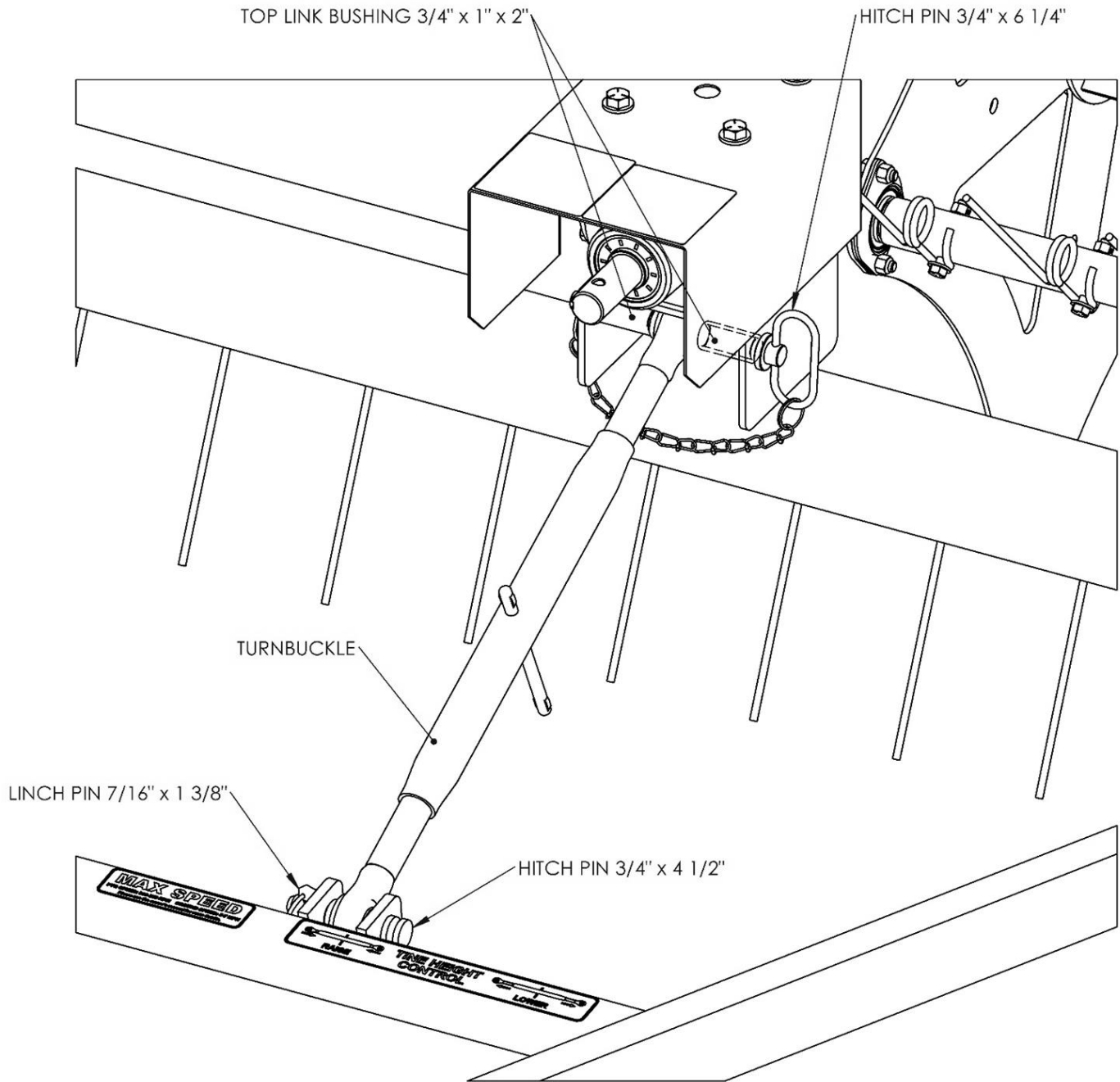
# TINE INSTALLATION



# SMV SIGN INSTALLATION

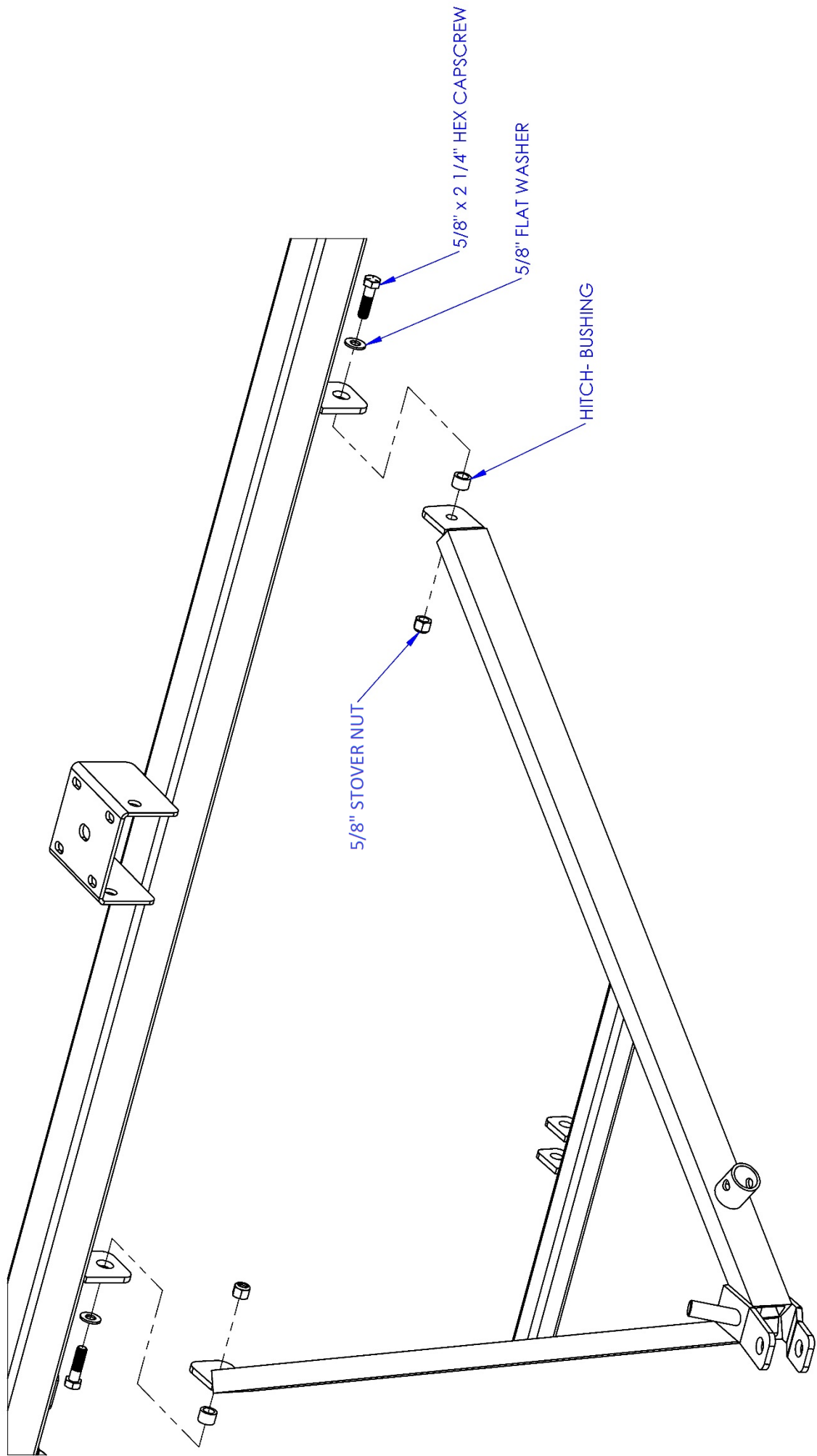


# TURNBUCKLE INSTALLATION



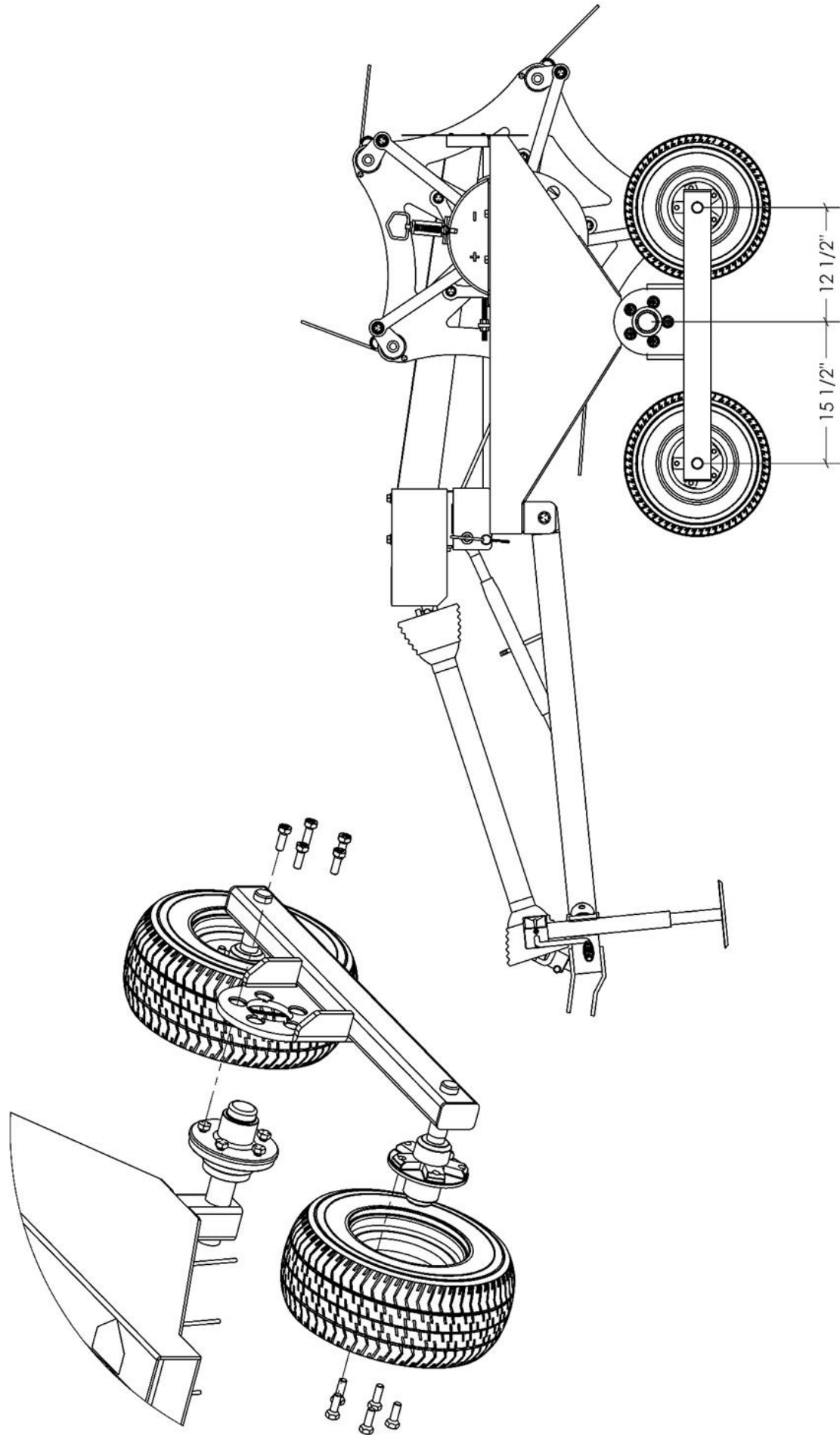
- Turnbuckle adjustment is critical to achieve proper tine height (see decal on hitch tube).
- Make sure top link bushings are installed with the top hitch pin.

# HITCH INSTALLATION



# TANDEM INSTALLATION

- Longer side toward the front of the Tedder.
- Driver side shown.
- Use appropriate hardware.





**BAUMAN**  
**MANUFACTURING**  
BACKED BY A TRADITION OF QUALITY